

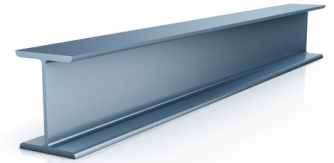
ATEX FESTOON SYSTEMS ON I-BEAM

CHARACTERISTICS:

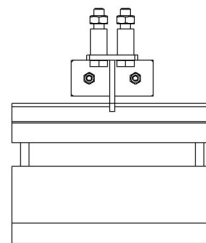
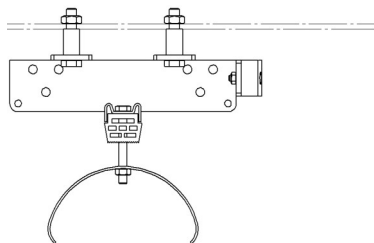
- Ball bearings of wheels do not require maintenance, they are sealed for life and do not need relubrication.
- Saddle with complete support for the electric cables manufactured in laminated steel.
- Rubber made buffers to reduce strokes between adjacent trolleys.

OPTIONS:

- Towing ropes.



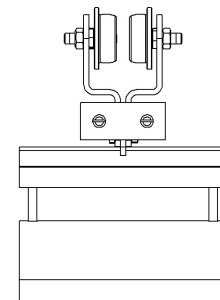
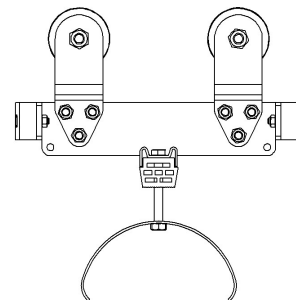
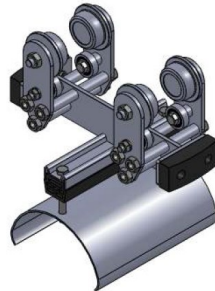
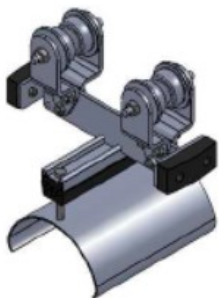
END CLAMP



L: cable trolley length (mm).
PL: diam. and useful width of the saddle (mm).

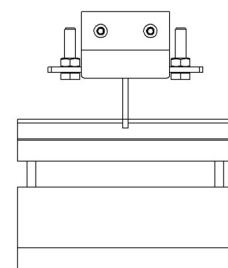
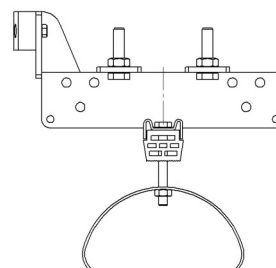
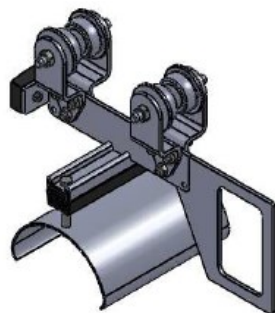
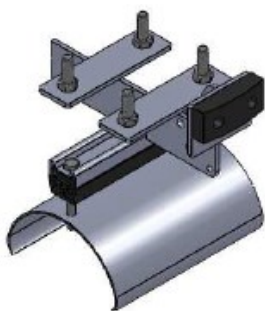
| REFERENCE | CODE | MATERIAL | |
|----------------|------|-----------------|-----------------|
| | | Body and Saddle | Screws |
| 2347-L-PL-2-Ex | -- | Stainless steel | Stainless steel |

CABLE TROLLEY



| REFERENCE | CODE | MATERIAL | | |
|-------------------|------|-----------------|-----------------|-----------------|
| | | Body and Saddle | Wheels/Rollers | Screws |
| 2347-L-PL-5-Ex | -- | Stainless steel | Stainless steel | Stainless steel |
| 2347-L-PL-GB-5-Ex | -- | Stainless steel | Stainless steel | Stainless steel |

TOWING CLAMP or TOWING TROLLEY WITH WINDOW



| REFERENCE | CODE | MATERIAL | | |
|-------------------|------|-----------------|-----------------|-----------------|
| | | Body and Saddle | Wheels/Rollers | Screws |
| 2347-L-PL-6-Ex | -- | Stainless steel | -- | Stainless steel |
| 2347-L-PL-GB-6-Ex | -- | Stainless steel | Stainless steel | Stainless steel |