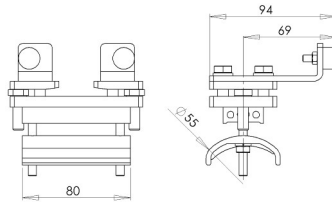
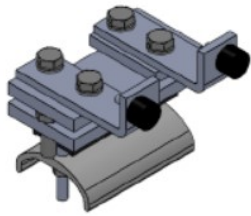




# MEDIUM SERIES

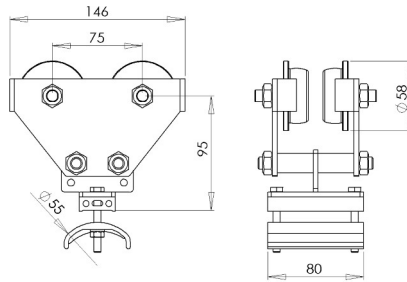
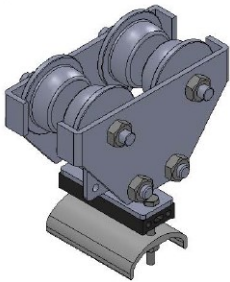
## SERIES 2318

### END CLAMP



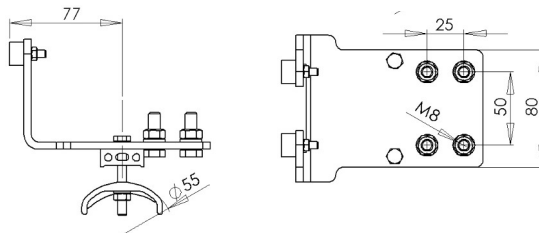
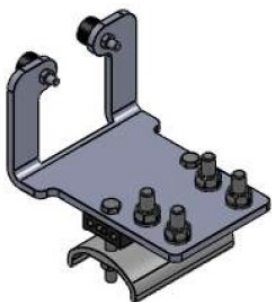
REFERENCE	CODE	MATERIALS		
		Body	Screws	Saddle
H-2318-2	--	Zinc plated steel	Zinc plated steel	Polipropilene
H-2318-CH-2-Inox	--	Stainless steel	Stainless steel	Stainless steel

### CABLE TROLLEY



REFERENCE	CODE	MATERIALS			
		Body	Wheels	Screws	Saddle
H-2318-P-5	--	Zinc plated steel	RC-55	Zinc plated steel	Polipropilene
H-2318-5	--	Zinc plated steel	RC-58	Zinc plated steel	Polipropilene
H-2318-GB30-5	--	Zinc plated steel	RC-58+GB30	Zinc plated steel	Polipropilene
H-2318-CH-P-5-Inox	--	Stainless steel	RC-55	Stainless steel	Stainless steel
H-2318-CH-5-Inox	--	Stainless steel	RC-58-Inox	Stainless steel	Stainless steel
H-2318-CH-GB30-5-Inox	--	Stainless steel	RC-58+GB30-Inox	Stainless steel	Stainless steel

### TOWING CLAMP



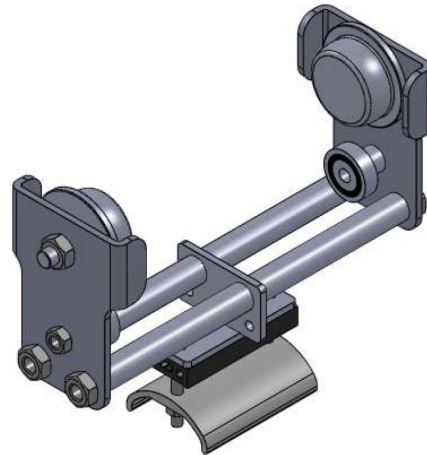
REFERENCE	CODE	MATERIALS		
		Body	Screws	Saddle
H-2318-6	--	Zinc plated steel	Zinc plated steel	Polipropilene
H-2318-CH-6-Inox	--	Stainless steel	Stainless steel	Stainless steel



### CUSTOMIZED DIMENSIONS

---

The dimensions (trolley length, saddle diam, etc.) could be modified to be adjusted to customer's requirements.  
Cable trolleys with only on pair of wheels or antilift rollers could be manufactured.



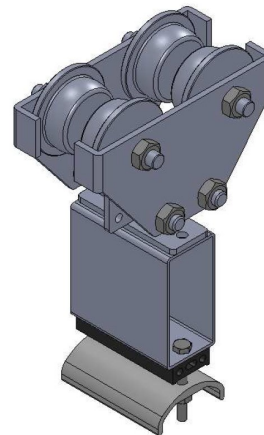
### OUTDOORS

---

Upon request, special materials are available: zinc plated steel + polyester coat, hot galvanized steel or stainless steel.

### TOWING TROLLEY WITH WHEELS

---



### TROLLEYS FOR ROUND CABLES, HOSES, ETC.

---

Hoses or round cables could be mounted on separated cable holders under the trolleys.

