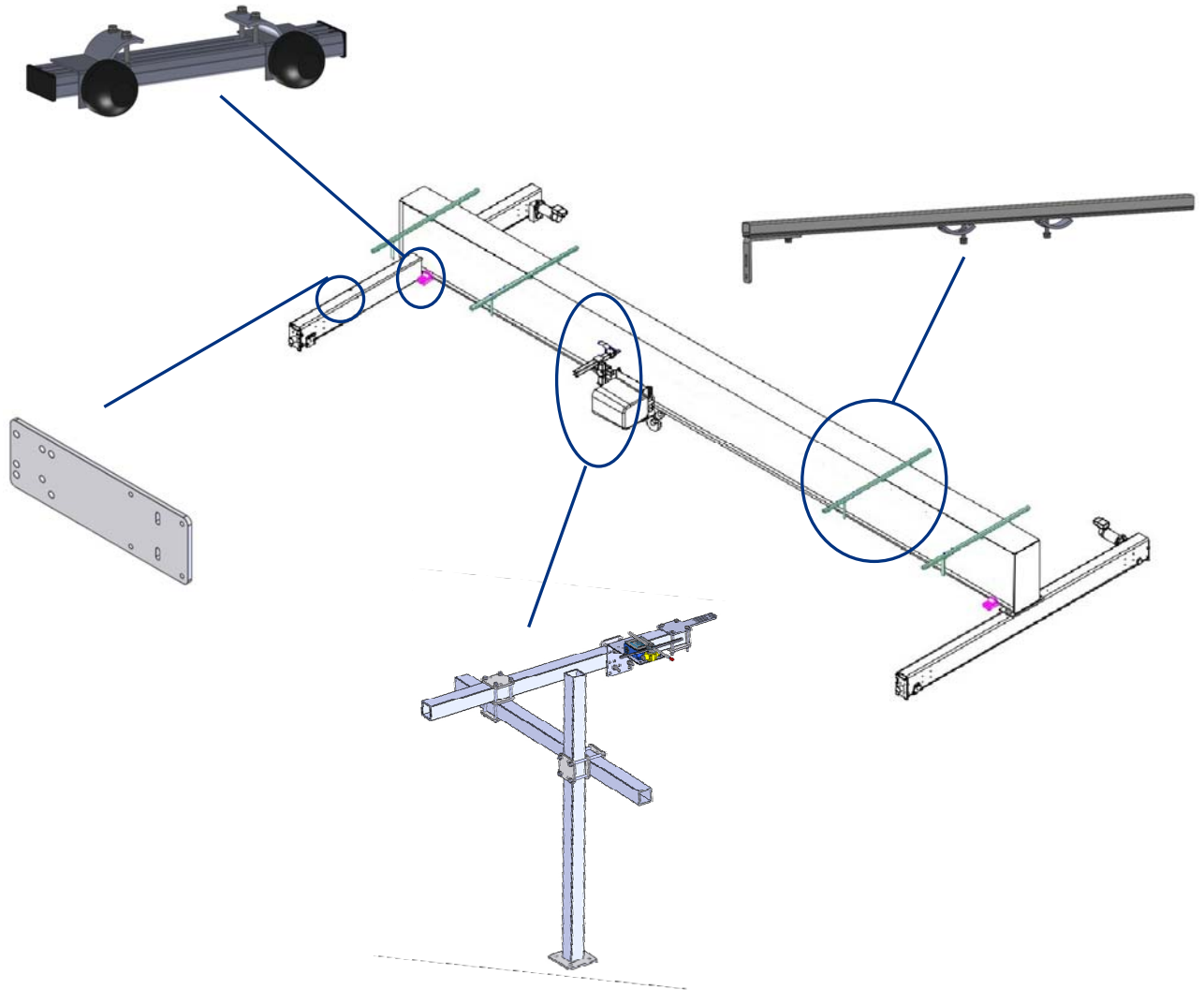




**Industrias  
GALARZA, S.A.**<sup>®</sup>  
Leaders in electrical conductivity since 1958

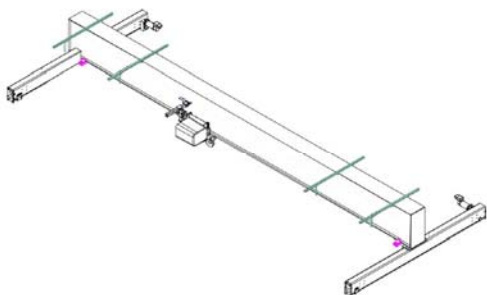
## CATALOGUE 2022



PHOTO

DESCRIPTION

SERIES



CRANE KITS

CP





## Generalities

The supply of the products contained in this catalogue is subject to the conformity of the tariff in force at the moment and the terms contained in these General Conditions of Sale and Guarantees.

## Orders and prices

All orders received by IGA will be confirmed via fax or email. If in the following 24 hours IGA does not receive any claim, they will be considered definitive. IGA reserves the right to accept or reject any order.

## Codes

The codes indicated in this catalogue are the standard products of IGA.

## Delivery time

If for reasons beyond our control we can not fulfill this service commitment, IGA will inform the customer of the new term within a maximum of 48 hours after the reception of the order.

The rest of references will be served in the shortest period of time possible and may make partial deliveries.

Orders received that have a delivery time less than 72 hours, will follow the procedure described above.

The breach of the previous commitment or a fractioned issue will not be grounds for compensation.

## Transport

Our products are considered expired in our warehouse and the date of issue is shown on the delivery note.

The goods travels at the addressee expense and risk, even if they are sent prepaid.

In the case of lack of packages or visible damages due to transportation, the addressee must write it down on the delivery note, claim the carrier and inform the commercial department of IGA within 48 hours. Otherwise, it will be considered the conformity of the goods in quantity and condition . Claims for delays in transportation will not be accepted.

After 8 days from receipt of the goods, no claims will be accepted about the contents of the boxes.

## Refunds

The products invoiced by IGA are considered a firm sale and has no right to refund.

In case of an error in the execution of the order, the following shall be taken into account:

- The change must be authorized by the commercial direction of IGA. The warehouse of IGA will not accept any product without authorization.

- The accepted material will have a 20% reduction of its value for verification expenses.

- The goods returned to IGA travel at the client's risk.

## Installations

IGA is exempted from any responsibility in the installations that do not comply with the advice or with the specifications and features of each range of product.

## Warranty

IGA range of products has a 2 year warranty. The acknowledgment of the responsibility in warranty corresponds only to IGA and / or to its insurance company. Any other defect caused by aging, corrosion, improper installation or improper application, will not be subject to possible claims.

## Jurisdiction

IGA will try to resolve any divergence with his clients through friendly channels. Having said that, in case of litigation, the parties agree and are obliged to submit to the arbitration appointed by the Court of the Arbitration Association of Bilbao, which will be responsible for the administration of the aforementioned arbitration in accordance with its Statute and Regulations. Likewise, they are obliged from now on to comply with the arbitral report that is issued.

IGA reserves the modification of the articles without previous notice.

# INDEX

Support arm	Page 2
Components for Support arm	Page 3
Carriage limit switch support plate	Page 4
Bridge limit switch support plate	Page 4
Limit switch arm	Page 4
Hoist stop	Page 5



Twitter  
@indgalarza



Facebook  
Industrias Galarza, S.A.



LinkedIn  
Industrias Galarza, S.A.

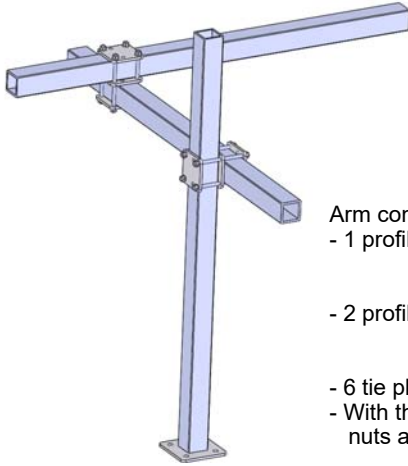


# CP CABLE CHAIN

## OTHER COMPONENTS FOR THE BRIDGE CRANE

### SUPPORT ARM

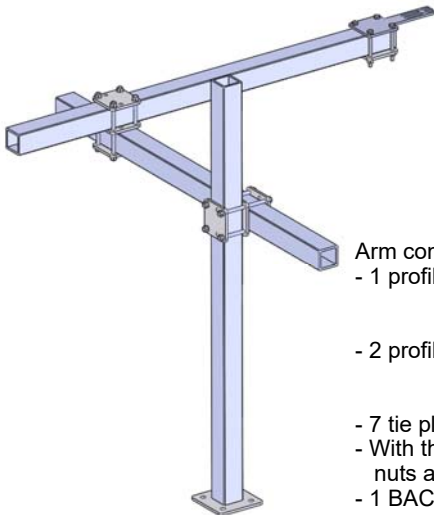
#### Support arm



- Arm composed of:
- 1 profile
    - BST 35 ≤ 5 tons
    - BST 50 ≥ 6Tn
  - 2 profiles of 1 mtr
    - 35x35 ≤ 5 tons
    - 50x50 ≥ 6Tn
  - 6 tie plates PTS-35/50
  - With their corresponding bolts, nuts and washers

TONS.	REFERENCE	CODE	MATERIAL			WEIGHT
			Plate	Tube	Screws	
≤ 5 Tn	BS-35	215014	Zinc plated steel	35 Zinc plated steel	Zinc plated steel	---
≥ 6Tn	BS-50	215015	Zinc plated steel	50 Zinc plated steel	Zinc plated steel	---

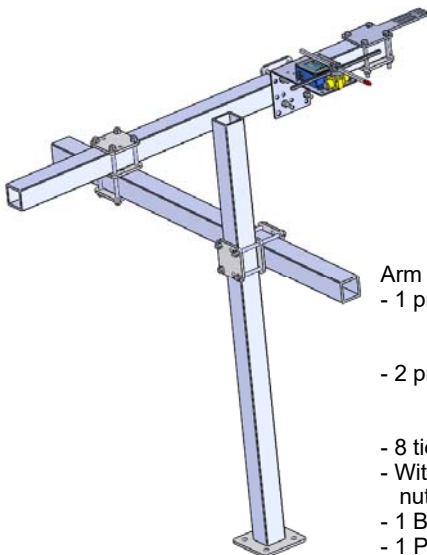
#### Support arm with chain arm for cable chain



- Arm composed of:
- 1 profile
    - BST 35 ≤ 5 tons
    - BST 50 ≥ 6Tn
  - 2 profiles of 1 mtr
    - 35x35 ≤ 5 tons
    - 50x50 ≥ 6Tn
  - 7 tie plates PTS-35/50
  - With their corresponding bolts, nuts and washers
  - 1 BACP-24

TONS.	REFERENCE	CODE	MATERIAL			WEIGHT
			Plate	Tube	Screws	
≤ 5 Tn	BSA-35	215016	Zinc plated steel	35 Zinc plated steel	Zinc plated steel	---
≥ 6Tn	BSA-50	215017	Zinc plated steel	50 Zinc plated steel	Zinc plated steel	---

#### Support arm with chain arm for cable chain and limit switch



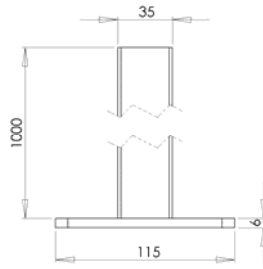
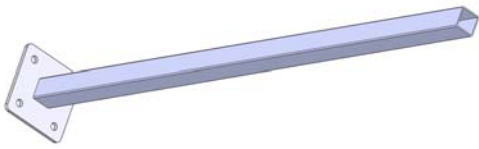
- Arm composed of:
- 1 profile
    - BST 35 ≤ 5 tons
    - BST 50 ≥ 6Tn
  - 2 profiles of 1 mtr
    - 35x35 ≤ 5 tons
    - 50x50 ≥ 6Tn
  - 8 tie plates PTS-35/50
  - With their corresponding bolts, nuts and washers
  - 1 BACP-24
  - 1 PSFCP-50

TONS.	REFERENCE	CODE	MATERIAL			WEIGHT
			Plate	Tube	Screws	
≤ 5 Tn	BSAF-35	215018	Zinc plated steel	35 Zinc plated steel	Zinc plated steel	---
≥ 6Tn	BSAF-50	215019	Zinc plated steel	50 Zinc plated steel	Zinc plated steel	---



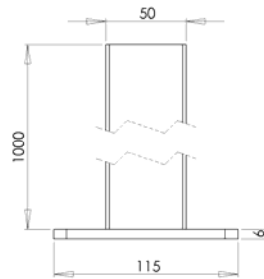
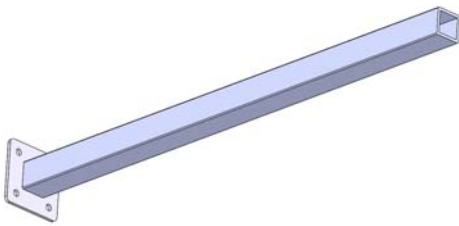
# CP CABLE CHAIN

## 35mm tube support arm



REFERENCE	CODE	MATERIAL	WEIGHT
BST-35	215020	Zinc plated steel	0,245 Kg

## 50mm tube support arm



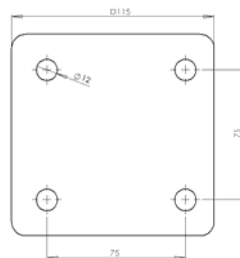
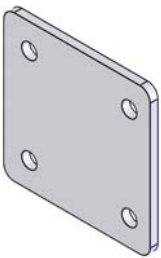
REFERENCE	CODE	MATERIAL	WEIGHT
BST-50	215021	Zinc plated steel	0,275 Kg

## Profile



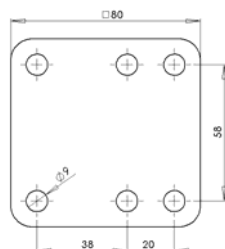
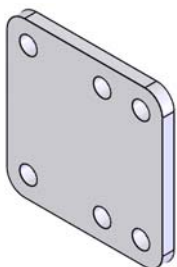
REFERENCE	CODE	DESCRIPTION	MATERIAL	BAR LENGTH	WEIGHT
2307-1	306031	35 x 35 profile	Zinc plated steel	1 meter	2,1 Kg/m
---	942478	50 x 50 profile	Zinc plated steel	1 meter	---

## Hoist base plate



REFERENCE	CODE	MATERIAL	WEIGHT
PTP-50	215011	Zinc plated steel	0,245 Kg

## Tie plate for 35/50 tube and support

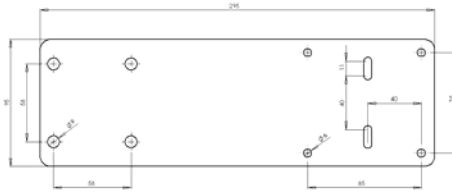
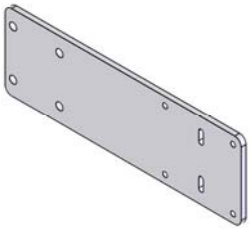


REFERENCE	CODE	MATERIAL	WEIGHT
PTS-35/50	215010	Zinc plated steel	0,275 Kg



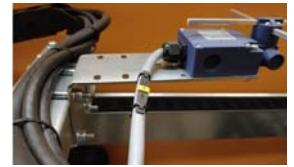
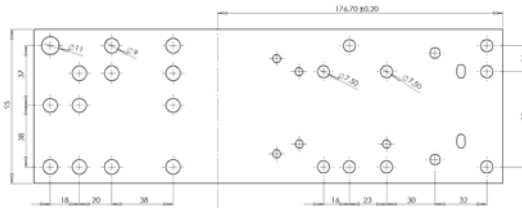
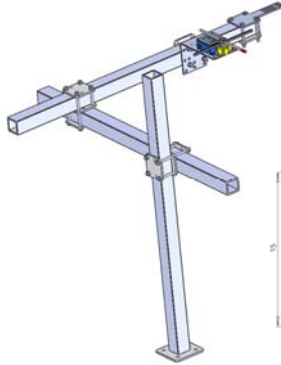
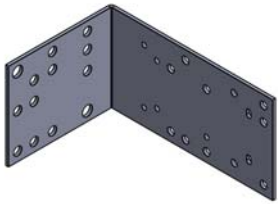
# CP CABLE CHAIN

## Carriage limit switch support plate 50



REFERENCE	CODE	MATERIAL	WEIGHT
PSFCC-50	215012	Zinc plated steel	0,300 Kg

## Bridge limit switch support plate 50



REFERENCE	CODE	MATERIAL	WEIGHT
PSFCP-50	215013	Zinc plated steel	0,370 Kg

## LIMIT SWITCH ARM



REFERENCE	CODE	MATERIAL			WEIGHT
		Adjustable support	Flange assembly	Arm	
BFC-1	21600	Zinc plated steel	Zinc plated steel	Galvanized steel	---

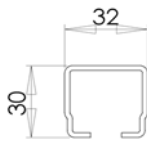
Support arm  
- 2349-1 (30 x 32 mm) = CM-CP

Chosen the support arm, define its length.

Example:  
- CM-CP-1000 (1.000mm)

Arm composed by  
- 1 2349-1 profile  
- 2 beam claw  
- 1 L-stop

## Profile



- Section: 1,794 cm<sup>2</sup>  
- Ix: 2,02 cm<sup>4</sup>  
- Wx: 1,20 cm<sup>3</sup>

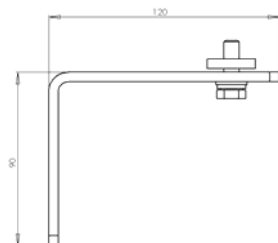
REFERENCE	CODE	MATERIAL	BAR LENGTH	WEIGHT
2349-1	309485	Galvanized steel	X meters	1,40 Kg/m

## Beam clip



FOR PROFILE	REFERENCE	CODE	MATERIAL		WEIGHT
			Body	Screws	
For Profile 2349-1	2349-12	309262	Zinc plated steel	Zinc plated steel	0,150 Kg

## L-Stop

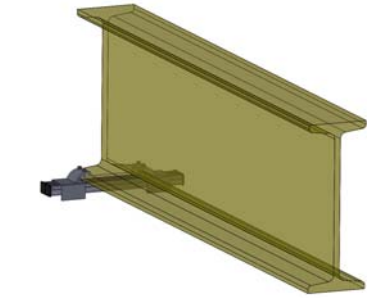


FOR PROFILE	REFERENCE	CODE	MATERIAL	WEIGHT
2349-1	TBFC-1	216001	Zinc plated steel	0,190 Kg

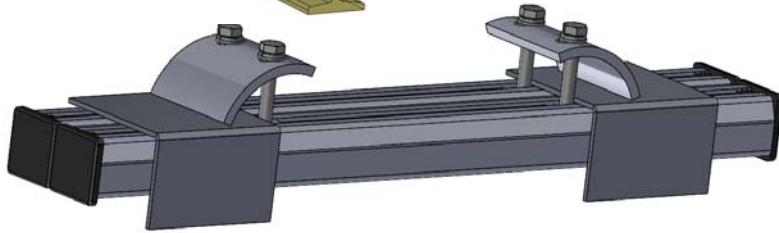


# CP CABLE CHAIN

## HOIST STOP



REFERENCE	CODE	MATERIAL			WEIGHT
		Adjustable support	Flange assembly	Arm	
TP-1	216002	Zinc plated steel	Zinc plated steel	Galvanized steel	---

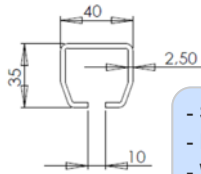


Chosen the support arm, define its length.

Example:  
-TP-1-500.

Arm composed of:  
- 2 profiles 2500-1.  
- 2 beam claw CBTP-1  
- 2 L-Stop TTP-1

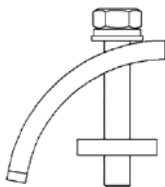
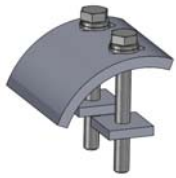
## Profile



- Section: 3,022 cm<sup>2</sup>  
- Ix: 4,985 cm<sup>4</sup>  
- Wx: 2,611 cm<sup>3</sup>

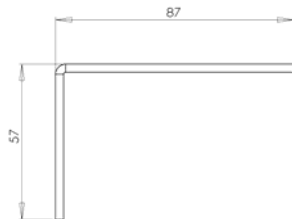
REFERENCE	CODE	MATERIAL	BAR LENGTH	WEIGHT
2500-1	305484	Galvanized steel	X Meters	2,2 Kg/m

## Clip



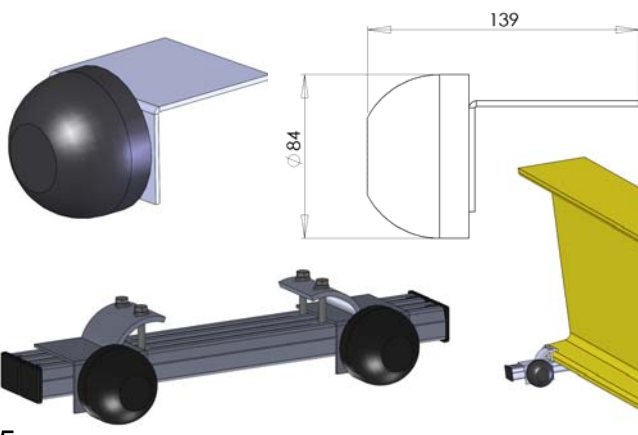
REFERENCE	CODE	MATERIAL		WEIGHT	
		Body	Screws		
For Profile 2500-1	CBTP-1	216003	Zinc plated steel	Zinc plated steel	0,28 Kg

## L-Stop



FOR ARM	REFERENCE	CODE	MATERIAL	WEIGHT
2500-1	TL-1	216004	Zinc plated steel	0,33 Kg

## Progressive L-stop (For hoists that do not have a rubber stop)



FOR ARM	REFERENCE	CODE	MATERIAL		WEIGHT
			Body	Stop	
2500-1	TLP-1	216005	Zinc plated steel	Mecanoru-bber	....Kg

Chosen the support arm, define its length.

Example:  
-TP-1-500.

Arm composed of:  
- 2 Profiles 2500-1.  
- 2 CBTP-1 flange set  
- 2 Progressive L-stop TPP-1







# Industrias GALARZA, S.A.®

Leaders in electrical conductivity since 1958

## PRODUCT RANGE



**C-Rail Festoon Systems**

**I-Beam Festoon Systems**

**Multiconductor Modular Line**  
From 40 to 200 amps

**Monoconductor Modular Line**  
From 300 to 1250 amps

**Unguarded conductor systems**



**ATEX Festoon Systems**

**Cable chains**

**Cable and cable glands**

**Cable reels**

**Insulators and moulded pieces**

## MARKETS

CRANES



PORTS&CONTAINERS HANDLING



BULK MATERIAL HANDLING



METALLURGY



MINNING & ENERGY



TUNNELLING



ENVIRONMENTAL TECHNOLOGY



WIND POWER



AUTOMOTIVE



OFFSHORE



THEATRE STAGE TECH.



AGRICULTURE



INDUSTRIAS GALARZA S.A.

P.I. Bidosola, Pab. D-4

48142 ARTEA (BIZKAIA)

SPAIN

Tel. +34 944 47 18 12

Fax. +34 944 76 42 76

E.mail: [info@industriasgalarza.com](mailto:info@industriasgalarza.com)

[www.industriasgalarza.com](http://www.industriasgalarza.com)

DISTRIBUTED BY: